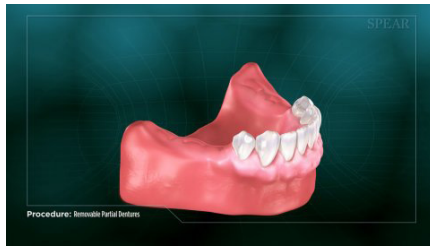
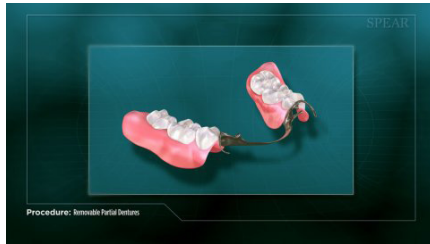


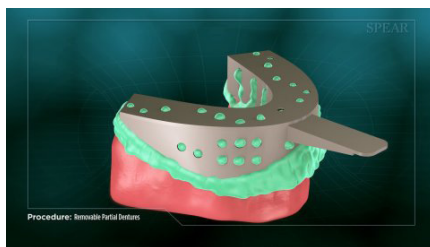
Removable Partial Dentures



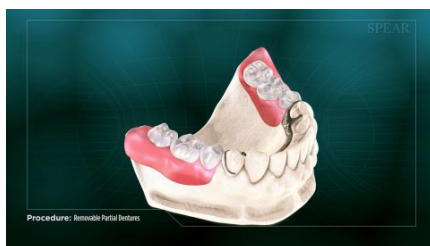
When circumstances do not allow for a bridge or dental implants, removable partial dentures are an excellent option to replace missing teeth. They provide improved esthetics by replacing the missing teeth, and improved overall function for eating and speech. It will typically take multiple appointments to complete this process.



Removable partial dentures are an appliance placed in the mouth containing replacement teeth typically mounted in a base made of a pink gum-colored resin formed over a wire frame. They are designed to be removable without the assistance of a dental professional.



The process of creating the dentures begins with your doctor taking several impressions of your existing teeth and the areas missing teeth.



These impressions are then sent to a laboratory, where an expert technician builds a model of your mouth. The lab then works closely with your doctor to design your appliance using the model as reference.



As each phase of the design is completed, your doctor will meet with you to check for proper fit and bite alignment. It usually requires multiple incremental fittings to ensure the best final result for you.



After a brief period of adjusting to the feel of the appliance in your mouth, you will gradually be able to eat while wearing your dentures, making eating easier and more pleasurable for you.



Removable Partial Dentures



Once your dentures are finished and you have fully adjusted to them, you will have a removable restoration specially designed to mimic the appearance of natural teeth that improves the overall function of your mouth.

